

# TRANSPORTATION LEADERSHIP ACADEMY



**Transportation**  
for America



U.S. Department of Transportation  
**Federal Highway  
Administration**

**MOVING FORWARD: PART I, TEAM EXERCISE**

**BETH OSBORNE**

# ACTION PLANS

# What makes a good action plan?

Specific

Measurable

Assignable

Realistic

Time-bound



Rosmarie Voegtli. Flickr Creative Commons <https://flic.kr/p/8ndSmK>

# What makes a good action plan?

## Define Victory

- *What do you want to achieve?*
- *Long-term goals (Newspaper headline)*

## Chart Your Course

- *What are your milestones?*
- *Develop tasks and identify partners*

## Track Progress

- *How will you track progress? What is your timeline?*

# Team Worksheet

|  | Annual / Yearly  | 5 year horizon | 20-25 year horizon  |                    |
|--|--|----------------|---------------------|--------------------|
|  | Report card  | TIP            | Scenario Evaluation | Project Evaluation |
| What you have / do now                   | <i>MAP-21 (injuries, fatalities, state of good repair)</i> |                |                     |                    |
| What you want to have / do in the future | <i>(health, accessibility, GHG)</i>                        |                |                     |                    |

# Results

## WHAT YOU DO NOW

- *Assess scenarios in the LRTP by various measures*
- *Projects are scored in general process, but project selection is political decision*

## WHAT YOU WANT TO DO IN THE FUTURE

- *Improved cost - benefit analysis*
- *A dashboard that provides a clear overview of our transportation system performance that is accurate and easy for the public to understand.*
- *More coordination with local communities and DOT*

# Deciding Where to Focus

Criteria to consider:

- To what extent is it already in the works?
- How much does it leverage the time and leadership of your team?
- Is it attainable, is it realistic?

# Action Plans, Part I



## Action plan: Team worksheet

DAY 1: Thursday, October 13

### Define Victory

How will you define victory? What are the regional goals that you want to achieve in your transportation system?

*We take politics out of our project selection process.*

*People develop a new, broader range of projects*



# Action Plans, Part I



## Action plan: Team worksheet

DAY 1: Thursday, October 13

### Define Victory

What are the top three performance measurement areas you will focus on to help you achieve your regional goals?

1. *Public health*

---

2. *Access to work*

---

3.

---

# Action Plans, Part I



## Action plan: Team worksheet

DAY 1: Thursday, October 13

### Define Victory

How will you apply the performance measures noted above? (e.g. to broad scenarios in the long range plan, to specific projects in the long range plan, to specific projects in the TIP etc.)

*Project selection in TIP*

---

*Comparing long range scenarios*

---

---

---

# Action Plans, Part I



## Action plan: Team worksheet

DAY 1: Thursday, October 13

### Chart Your Course

What resources, support, or technical assistance do you lack, but will need, to develop and implement the performance measures you listed above?

*Update traffic demand model*

---

*Data to on bicyclist and pedestrian travel*

---

---

---

# Action Plans, Part I

## *Group Work Time*



**TRANSPORTATION LEADERSHIP ACADEMY**

---

### Action plan: Team worksheet

**DAY 1: Thursday, October 13**

**Define victory**  
How will you define victory? What are the regional goals that you want to achieve in your transportation system?

---

---

---

What are the top three performance measurement areas you will focus on to help you achieve your regional goals?

1. \_\_\_\_\_

2. \_\_\_\_\_

3. \_\_\_\_\_

How will you apply the performance measures noted above? (e.g. to broad scenarios in the long range plan, to specific projects in the long range plan, to specific projects in the short-term TIP etc.)

---

---

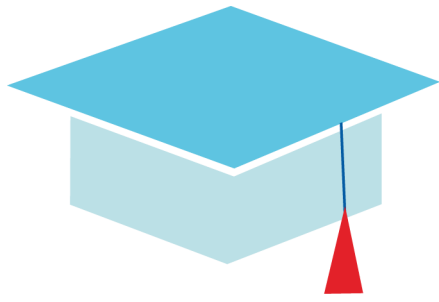
---

**Chart your course**  
What resources, support, or technical assistance do you lack, but will need, to develop and implement the performance measures you listed above?

---

---

---



# TRANSPORTATION LEADERSHIP ACADEMY



**Transportation**  
for America



U.S. Department of Transportation  
**Federal Highway  
Administration**

**QUESTIONS & COMMENTS**  
**#bostonTLA**