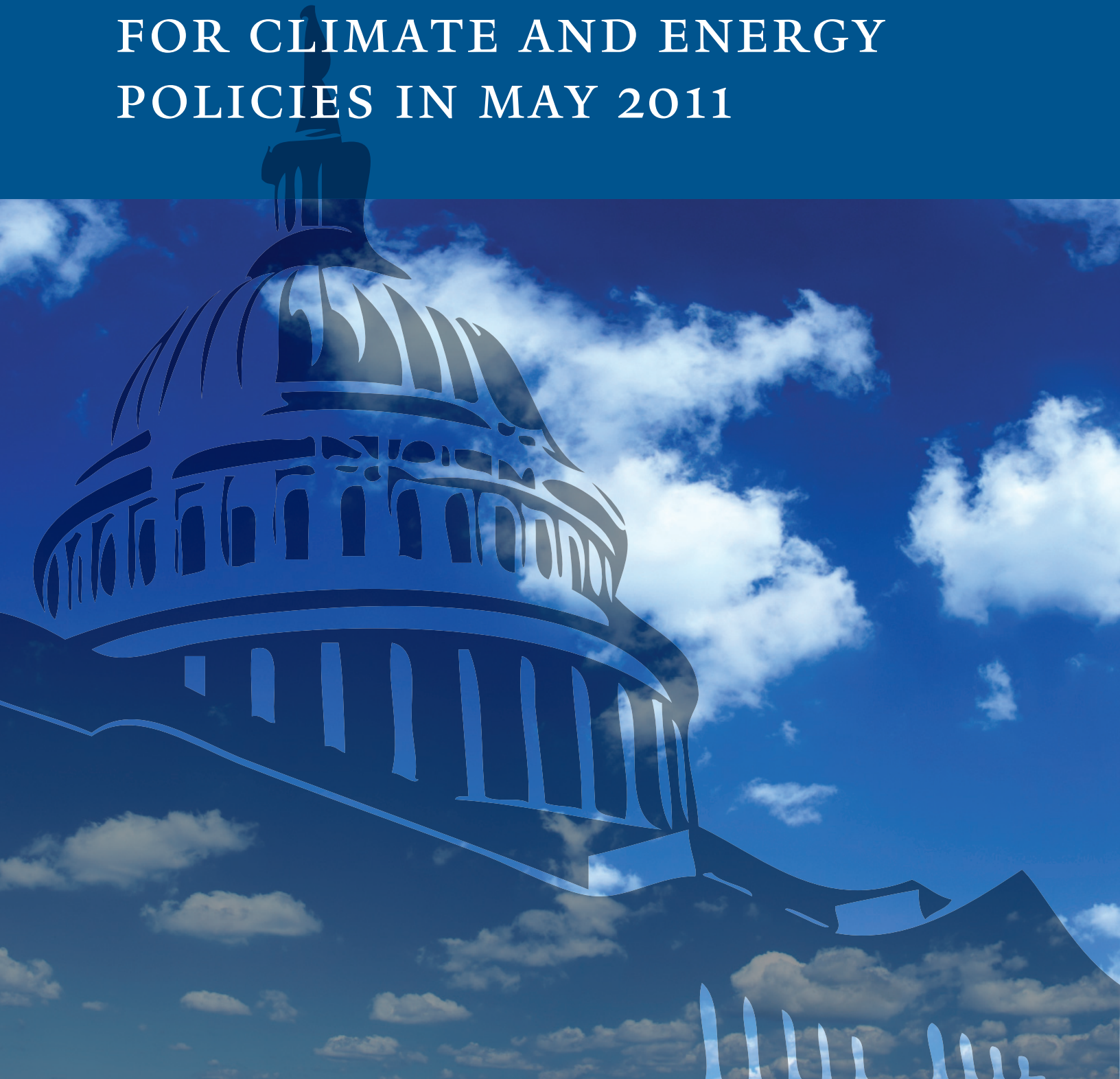


PUBLIC SUPPORT FOR CLIMATE AND ENERGY POLICIES IN MAY 2011



George Mason University
Center for Climate Change Communication

Climate Change in the American Mind: Public Support for Climate & Energy Policies in May 2011

Interview dates: April 23, 2011 – May 12, 2011

Interviews: 1,010 Adults (18+)

Margin of error: +/- 3 percentage points at the 95% confidence level.

NOTE: All results show percentages among all respondents, unless otherwise labeled. Totals may occasionally sum to more than 100 percent due to rounding.

This study was conducted by the Yale Project on Climate Change Communication and the George Mason University Center for Climate Change Communication, and was funded by the Surdna Foundation, the 11th Hour Project, and the Grantham Foundation for the Protection of the Environment.

Principal Investigators:

Anthony Leiserowitz, PhD

Yale Project on Climate Change Communication

School of Forestry and Environmental Studies, Yale University

(203) 432-4865 anthony.leiserowitz@yale.edu

Edward Maibach, MPH, PhD

Center for Climate Change Communication

Department of Communication, George Mason University

(703) 993-1587 emaibach@gmu.edu

Connie Roser-Renouf, PhD

Center for Climate Change Communication

Department of Communication, George Mason University

(707) 825-0601 croserre@gmu.edu

Nicholas Smith, PhD

Yale Project on Climate Change Communication

School of Forestry and Environmental Studies, Yale University

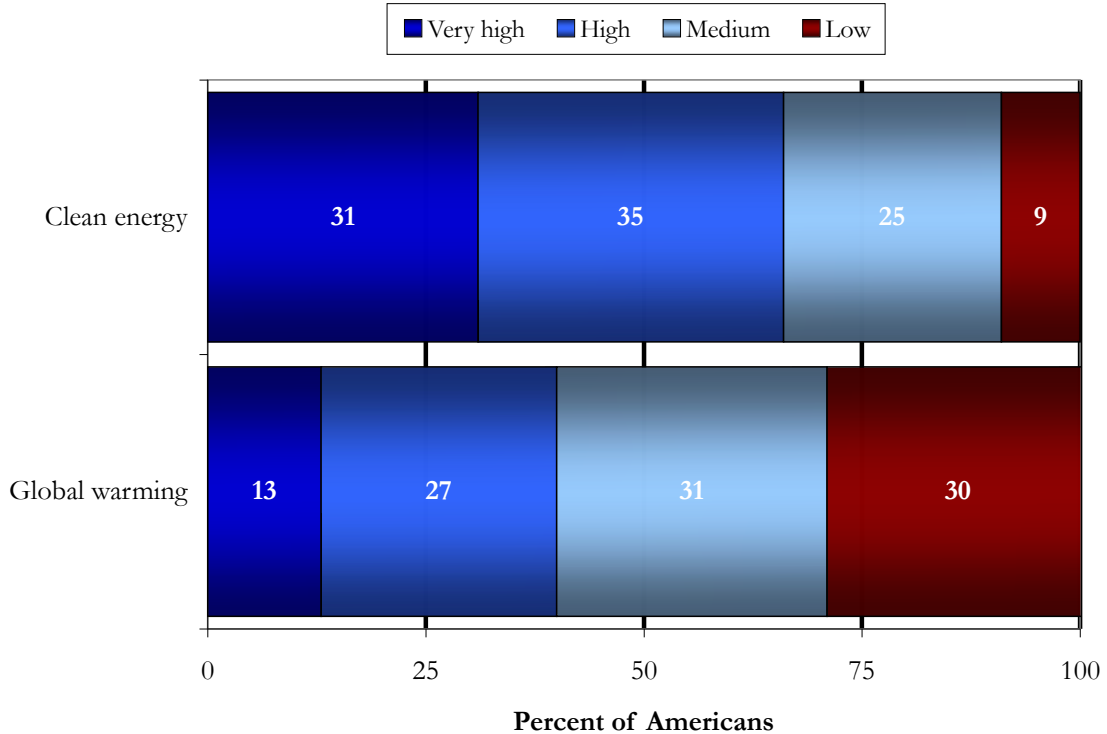
(203) 432-1208 nicholas.smith@yale.edu

Cite as: Leiserowitz, A., Maibach, E., Roser-Renouf, C. & Smith, N. (2011) *Climate change in the American Mind: Public support for climate & energy policies in May 2011*. Yale University and George Mason University. New Haven, CT: Yale Project on Climate Change Communication.

<http://environment.yale.edu/climate/files/PolicySupportMay2011.pdf>

Issue Priority

Priority for the President & Congress



Yale / George Mason (May 2011)

Q154¹. Do you think global warming should be a low, medium, high, or very high priority for the president and Congress?

	May 2011*	June 2010*	Jan 2010*	Nov 2008+
Very high	13	17	13	21
High	27	27	25	33
Medium	31	33	31	30
Low	30	23	31	17

* 2010 & 2011 Question wording = Do you think global warming should be a low, medium, high, or very high priority for the president and Congress?

+ 2008 Question wording = Here are some issues now being discussed in Washington, D.C. Do you think each of these issues should be a low, medium, high, or very high priority for the next president and Congress?

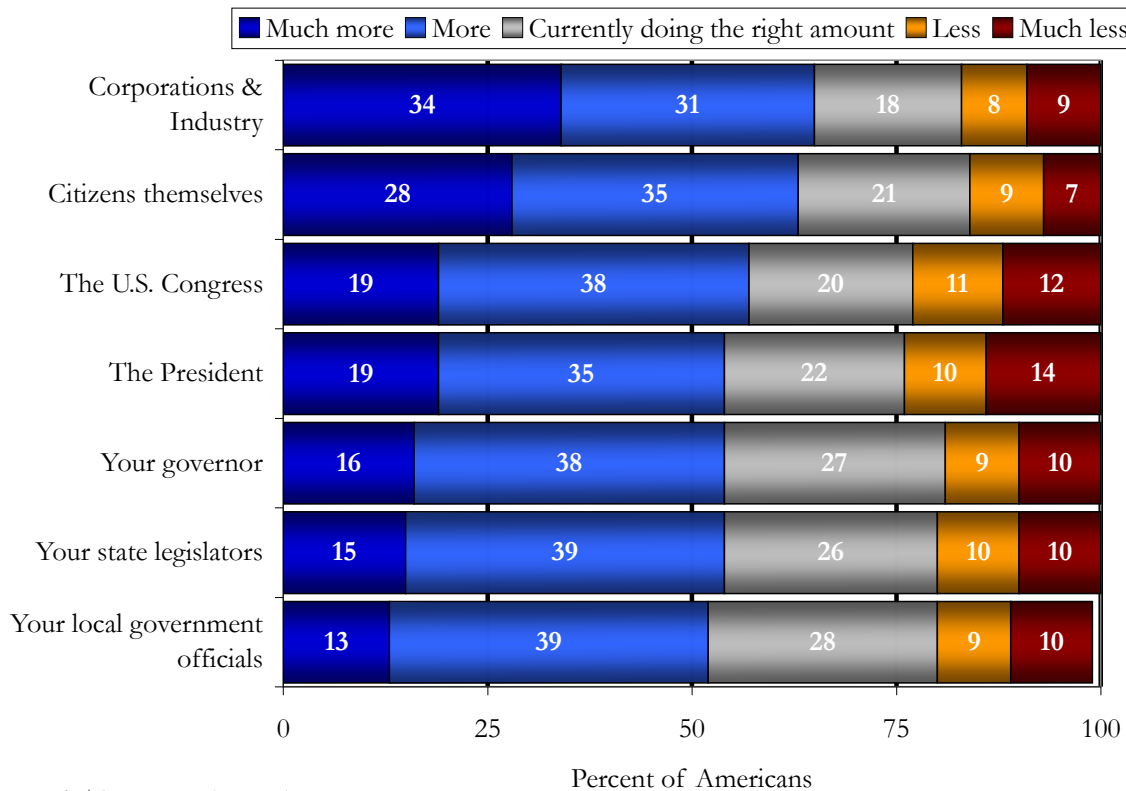
¹ Items are listed in the order they were asked despite occasional non-sequential item numbers. Items not shown in this report are being released separately.

Q155. Do you think that developing sources of clean energy should be a low, medium, high, or very high priority for the president and Congress?

	May 2011	June 2010	Jan 2010	Nov 2008
Very high	31	34	24	-
High	35	37	36	-
Medium	25	23	29	-
Low	9	6	11	-

Q162-168. Do you think each of the following should be doing more or less to address global warming? *Items randomized.*

Who Should Address Global Warming?



Your local government officials

	May 2011	June 2010	Jan 2010	Nov 2008
Much more	13	14	12	13
More	39	36	34	45
Currently doing the right amount	28	36	35	29
Less	9	8	8	7
Much less	10	7	10	6

Your state legislators

	May 2011	June 2010	Jan 2010	Nov 2008
Much more	15	15	14	16
More	39	36	36	47
Currently doing the right amount	26	33	30	25
Less	10	8	10	6
Much less	10	8	10	6

Your governor

	May 2011	June 2010	Jan 2010	Nov 2008
Much more	16	16	15	16
More	38	35	34	46
Currently doing the right amount	27	33	30	26
Less	9	9	10	6
Much less	10	8	11	6

The U.S. Congress

	May 2011	June 2010	Jan 2010	Nov 2008
Much more	19	19	19	26
More	38	35	35	41
Currently doing the right amount	20	26	23	20
Less	11	10	10	6
Much less	12	9	15	7

The President

	May 2011*	June 2010*	Jan 2010*	Nov 2008+
Much more	19	20	17	28
More	35	32	33	38
Currently doing the right amount	22	30	26	21
Less	10	9	9	6
Much less	14	10	15	7

*President Barack Obama

+President George W. Bush

Corporations and industry

	May 2011	June 2010	Jan 2010	Nov 2008
Much more	34	38	33	41
More	31	28	31	32
Currently doing the right amount	18	22	21	17
Less	8	7	7	5
Much less	9	6	9	6

Citizens themselves

	May 2011	June 2010	Jan 2010	Nov 2008
Much more	28	31	27	30
More	35	33	36	42
Currently doing the right amount	21	24	23	20
Less	9	7	7	5
Much less	7	5	8	5

Q169. People disagree whether the United States should reduce greenhouse gas emissions on its own, or make reductions only if other countries do too. Which of the following statements comes closest to your own point of view? The United States should reduce its greenhouse gas emissions...

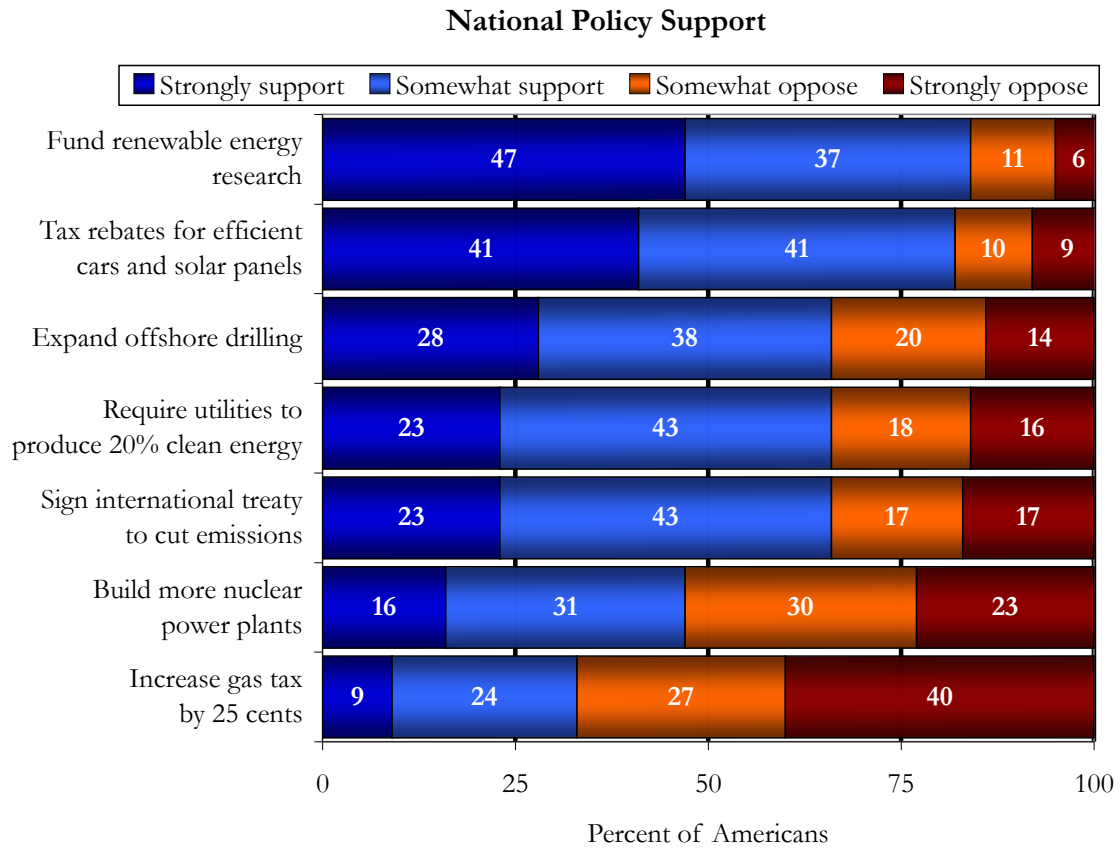
	May 2011	June 2010	Jan 2010	Nov 2008
Regardless of what other countries do	61	65	57	67
Only if other industrialized countries (such as England, Germany and Japan) reduce their emissions	3	3	3	2
Only if other industrialized countries and developing countries (such as China, India and Brazil) reduce their emissions	8	8	7	7
The US should not reduce its emissions	6	5	7	4
Don't know	23	19	25	20

Q170. How big of an effort should the United States make to reduce global warming?

	May 2011	June 2010	Jan 2010	Nov 2008
A large-scale effort, even if it has large economic costs	29	28	26	34
A medium-scale effort, even if it has moderate economic costs	38	41	36	40
A small-scale effort, even if it has small economic costs	19	18	21	17
No effort	14	13	18	9

National Policies

For full question text, see the tables below this chart.



Yale / George Mason (May 2011)

Q173. How much do you support or oppose requiring electric utilities to produce at least 20% of their electricity from wind, solar, or other renewable energy sources, even if it cost the average household an extra \$100 a year?

	May 2011	June 2010	Jan 2010	Nov 2008
Strongly support	23	22	18	31
Somewhat support	43	39	40	41
Somewhat oppose	18	22	21	17
Strongly oppose	16	18	21	11

Q174. How much do you support or oppose signing an international treaty that requires the United States to cut its emissions of carbon dioxide 90% by the year 2050?

	May 2011	June 2010	Jan 2010	Nov 2008
Strongly support	23	21	17	25
Somewhat support	43	44	44	44
Somewhat oppose	17	19	20	19
Strongly oppose	17	16	19	13

Q177. How much do you support or oppose expanding offshore drilling for oil and natural gas off the U.S. coast?

	May 2011	June 2010	Jan 2010	Nov 2008
Strongly support	28	23	21	37
Somewhat support	38	39	46	38
Somewhat oppose	20	21	21	14
Strongly oppose	14	17	12	11

Q178. How much do you support or oppose building more nuclear power plants?

	May 2011	June 2010	Jan 2010	Nov 2008
Strongly support	16	16	17	23
Somewhat support	31	37	32	38
Somewhat oppose	30	30	31	24
Strongly oppose	23	17	20	15

Q179. How much do you support or oppose funding more research into renewable energy sources, such as solar and wind power?

	May 2011	June 2010	Jan 2010	Nov 2008
Strongly support	47	42	41	53
Somewhat support	37	45	44	39
Somewhat oppose	11	10	11	6
Strongly oppose	6	3	4	2

Q180. How much do you support or oppose providing tax rebates for people who purchase energy-efficient vehicles or solar panels?

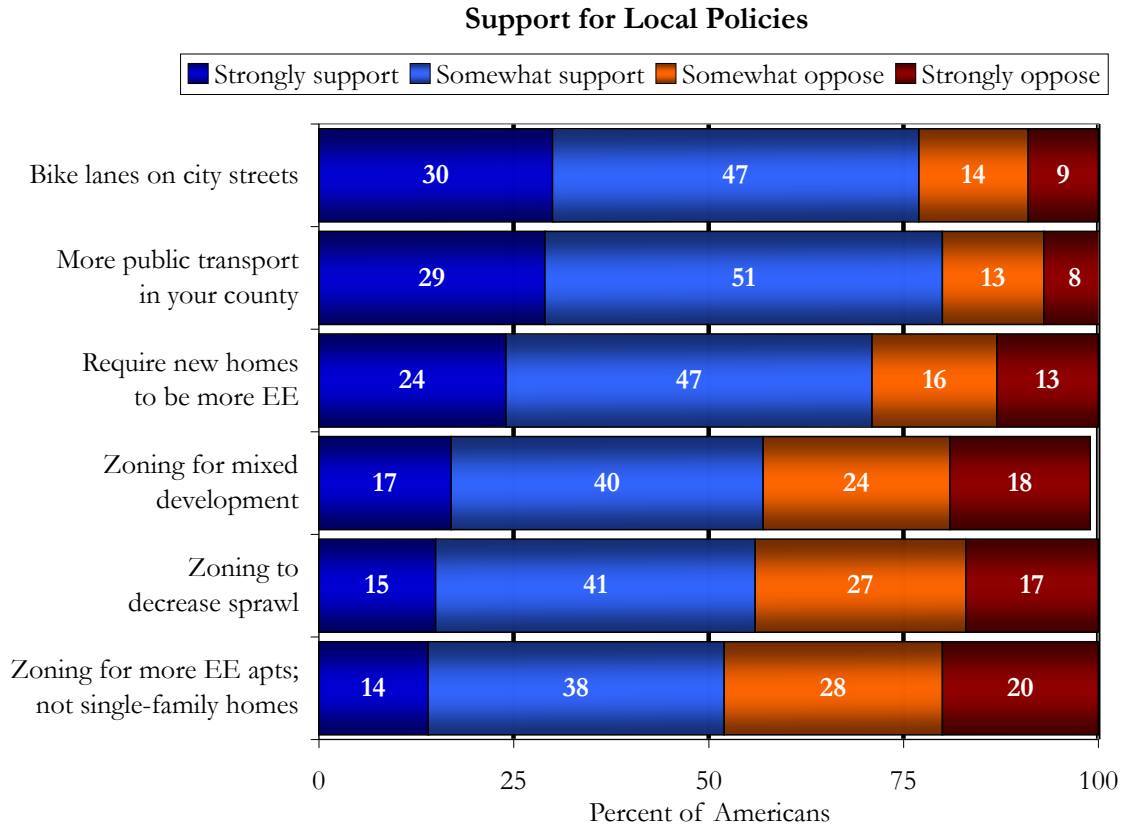
	May 2011	June 2010	Jan 2010	Nov 2008
Strongly support	41	41	32	38
Somewhat support	41	42	50	47
Somewhat oppose	10	12	10	11
Strongly oppose	9	5	7	4

Q181. How much do you support or oppose increasing taxes on gasoline by 25 cents per gallon and returning the revenues to taxpayers by reducing the federal income tax?

	May 2011	June 2010	Jan 2010	Nov 2008
Strongly support	9	9	8	9
Somewhat support	24	26	26	24
Somewhat oppose	27	33	31	30
Strongly oppose	40	32	34	37

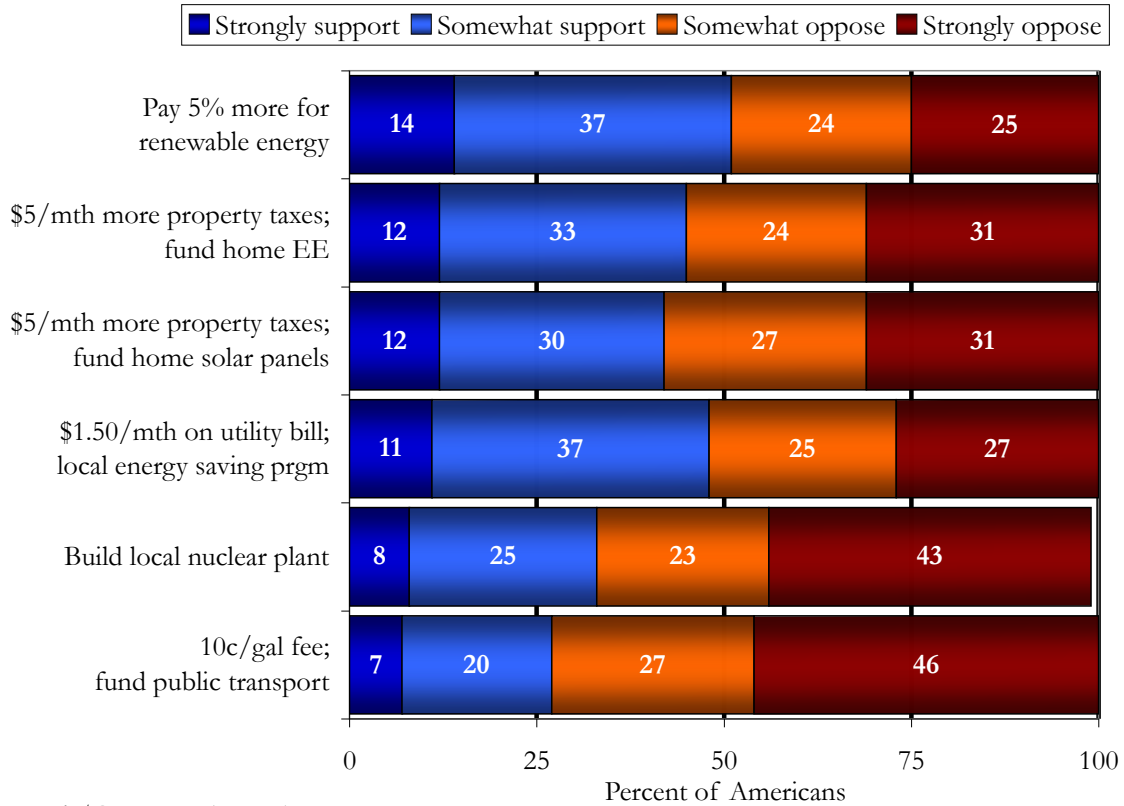
Local Policy Support

For full question text, see the tables below this chart.



Yale / George Mason (May 2011)

Support for Local Policies



Q122. How much do you support or oppose a \$1.50 fee added to your monthly electric utility bill to fund local programs to save energy?

	May 2011	June 2010	Jan 2010	Nov 2008
Strongly support	11	-	-	-
Somewhat support	37	-	-	-
Somewhat oppose	25	-	-	-
Strongly oppose	27	-	-	-

Q123. How much do you support or oppose paying 5% more on your monthly utility bill to get your electricity from renewable energy sources, like wind or solar?

	May 2011	June 2010	Jan 2010	Nov 2008
Strongly support	14	-	-	-
Somewhat support	37	-	-	-
Somewhat oppose	24	-	-	-
Strongly oppose	25	-	-	-

Q124. How much do you support or oppose a 10-cent fee added to each gallon of gasoline you buy, to fund local programs to improve public transportation?

	May 2011	June 2010	Jan 2010	Nov 2008
Strongly support	7	-	-	-
Somewhat support	20	-	-	-
Somewhat oppose	27	-	-	-
Strongly oppose	46	-	-	-

Q125. How much do you support or oppose regulations requiring any new home to be more energy efficient. This would increase the initial cost by about \$7,500, but save about \$17,000 in utility bills over 30 years?

	May 2011	June 2010	Jan 2010	Nov 2008
Strongly support	24	-	-	-
Somewhat support	47	-	-	-
Somewhat oppose	16	-	-	-
Strongly oppose	13	-	-	-

Q126. How much do you support or oppose a \$5-a-month increase in property taxes, to provide funding to help homeowners make energy-efficiency improvements to their homes (such as replacing old, inefficient furnaces, water heaters, air conditioners, and insulation)?

	May 2011	June 2010	Jan 2010	Nov 2008
Strongly support	12	-	-	-
Somewhat support	33	-	-	-
Somewhat oppose	24	-	-	-
Strongly oppose	31	-	-	-

Q127. How much do you support or oppose changing your county's zoning rules to promote the construction of more energy-efficient apartment buildings, instead of less efficient single-family homes?

	May 2011	June 2010	Jan 2010	Nov 2008
Strongly support	14	-	-	-
Somewhat support	38	-	-	-
Somewhat oppose	28	-	-	-
Strongly oppose	20	-	-	-

Q128. How much do you support or oppose changing your county's zoning rules to require that neighborhoods have a mix of housing, offices, industry, schools, and stores close together, to encourage walking and decrease the need for a car?

	May 2011	June 2010	Jan 2010	Nov 2008
Strongly support	17	-	-	-
Somewhat support	40	-	-	-
Somewhat oppose	24	-	-	-
Strongly oppose	18	-	-	-

Q129. How much do you support or oppose changing your county's zoning rules to decrease suburban sprawl and concentrate new development near the center of cities and towns, reducing commuting times?

	May 2011	June 2010	Jan 2010	Nov 2008
Strongly support	15	-	-	-
Somewhat support	41	-	-	-
Somewhat oppose	27	-	-	-
Strongly oppose	17	-	-	-

Q130. How much do you support or oppose a \$5-a-month increase in property taxes, to provide funding to homeowners that install solar panels?

	May 2011	June 2010	Jan 2010	Nov 2008
Strongly support	12	-	-	-
Somewhat support	30	-	-	-
Somewhat oppose	27	-	-	-
Strongly oppose	31	-	-	-

Q131. How much do you support or oppose constructing bike paths and installing bike lanes on city streets?

	May 2011	June 2010	Jan 2010	Nov 2008
Strongly support	30	-	-	-
Somewhat support	47	-	-	-
Somewhat oppose	14	-	-	-
Strongly oppose	9	-	-	-

Q132. How much do you support or oppose increasing the availability of public transportation in your county?

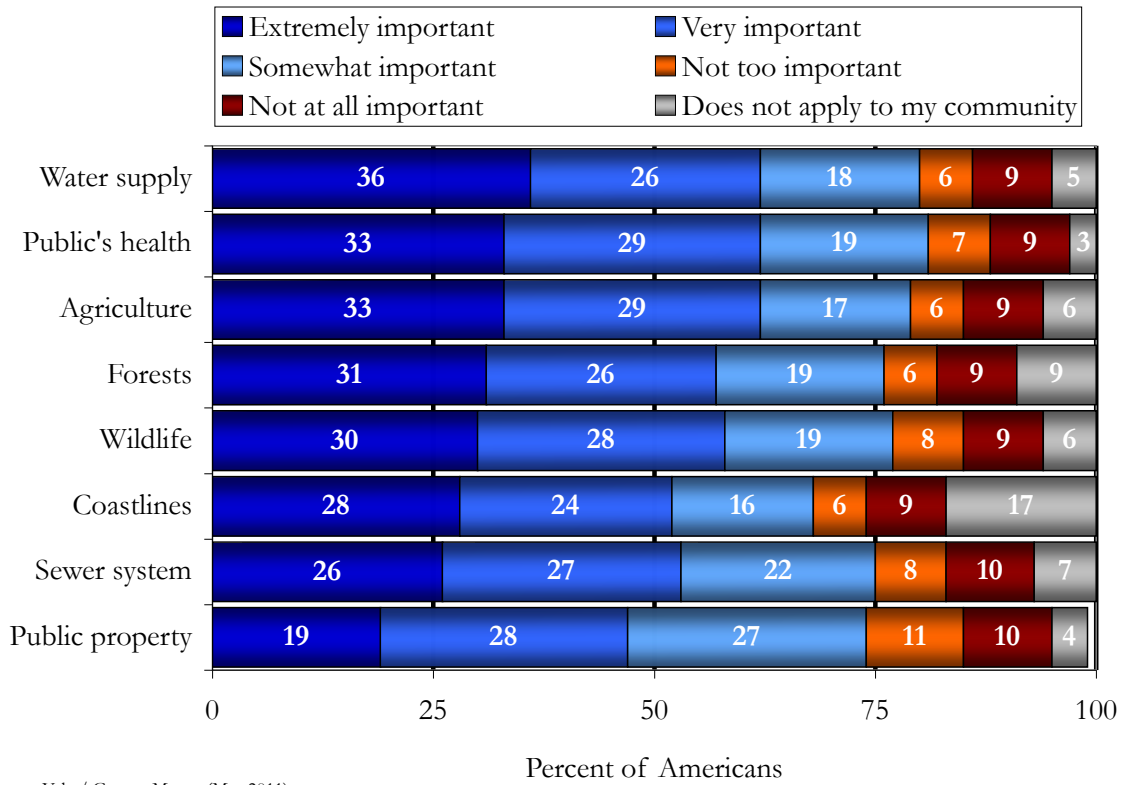
	May 2011	June 2010	Jan 2010	Nov 2008
Strongly support	29	-	-	-
Somewhat support	51	-	-	-
Somewhat oppose	13	-	-	-
Strongly oppose	8	-	-	-

Q133. How much do you support or oppose building a nuclear power plant in your local area?

	May 2011	June 2010	Jan 2010	Nov 2008
Strongly support	8	-	-	-
Somewhat support	25	-	-	-
Somewhat oppose	23	-	-	-
Strongly oppose	43	-	-	-

How important do you think it is for your community to take steps to protect the following from global warming?

Importance of Protecting Local Assets from Global Warming



Q135 - 142. How important do you think is it for your community to take steps to protect the following from global warming?

The water supply

	May 2011	June 2010	Jan 2010	Nov 2008
Extremely important	36	-	-	-
Very important	26	-	-	-
Somewhat important	18	-	-	-
Not too important	6	-	-	-
Not at all important	9	-	-	-
Does not apply to my community	5	-	-	-

The sewer system

	May 2011	June 2010	Jan 2010	Nov 2008
Extremely important	26	-	-	-
Very important	27	-	-	-
Somewhat important	22	-	-	-
Not too important	8	-	-	-
Not at all important	10	-	-	-
Does not apply to my community	7	-	-	-

The public's health

	May 2011	June 2010	Jan 2010	Nov 2008
Extremely important	33	-	-	-
Very important	29	-	-	-
Somewhat important	19	-	-	-
Not too important	7	-	-	-
Not at all important	9	-	-	-
Does not apply to my community	3	-	-	-

Public property

	May 2011	June 2010	Jan 2010	Nov 2008
Extremely important	19	-	-	-
Very important	28	-	-	-
Somewhat important	27	-	-	-
Not too important	11	-	-	-
Not at all important	10	-	-	-
Does not apply to my community	4	-	-	-

Agriculture

	May 2011	June 2010	Jan 2010	Nov 2008
Extremely important	33	-	-	-
Very important	29	-	-	-
Somewhat important	17	-	-	-
Not too important	6	-	-	-
Not at all important	9	-	-	-
Does not apply to my community	6	-	-	-

Wildlife

	May 2011	June 2010	Jan 2010	Nov 2008
Extremely important	30	-	-	-
Very important	28	-	-	-
Somewhat important	19	-	-	-
Not too important	8	-	-	-
Not at all important	9	-	-	-
Does not apply to my community	6	-	-	-

Forests

	May 2011	June 2010	Jan 2010	Nov 2008
Extremely important	31	-	-	-
Very important	26	-	-	-
Somewhat important	19	-	-	-
Not too important	6	-	-	-
Not at all important	9	-	-	-
Does not apply to my community	9	-	-	-

Coastlines

	May 2011	June 2010	Jan 2010	Nov 2008
Extremely important	28	-	-	-
Very important	24	-	-	-
Somewhat important	16	-	-	-
Not too important	6	-	-	-
Not at all important	9	-	-	-
Does not apply to my community	17	-	-	-

Q243. Overall, do you think that protecting the environment...

	May 2011	June 2010	Jan 2010	Nov 2008
Improves economic growth and provides new jobs	54	56	-	-
Has no effect on economic growth or jobs	29	25	-	-
Reduces economic growth and costs jobs	18	18	-	-

Q244. When there is a conflict between environmental protection and economic growth, which do you think is more important?

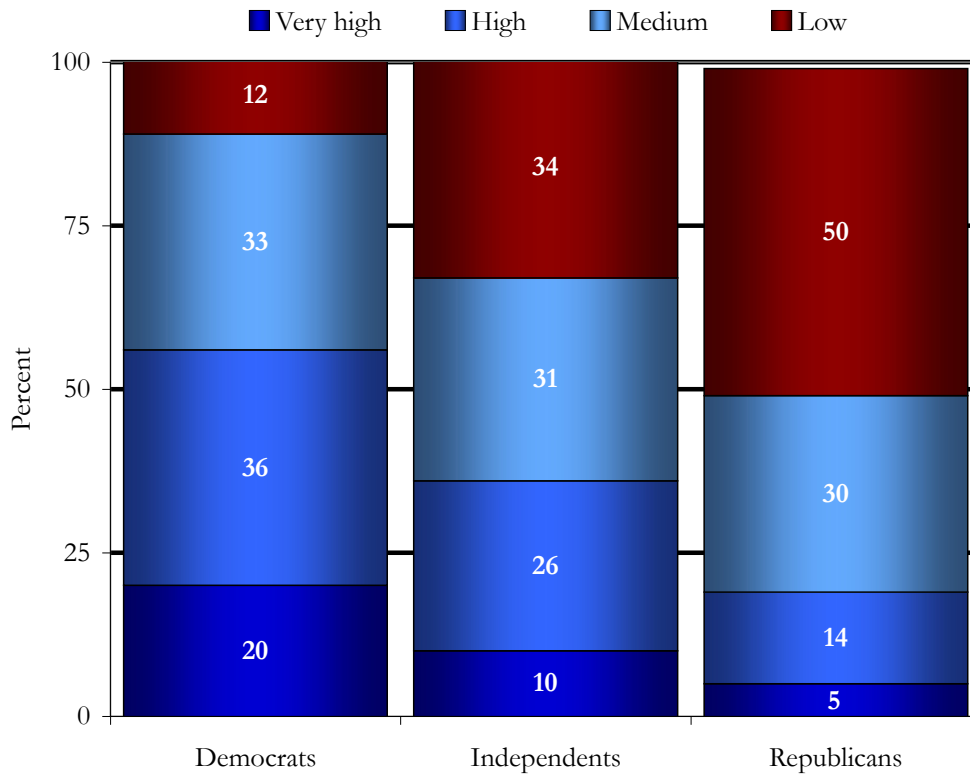
	May 2011	June 2010	Jan 2010	Nov 2008
Protecting the environment, even if it reduces economic growth	64	65	63	-
Economic growth, even if it leads to environmental problems	36	35	37	-

Policy Preferences by Political Party

Registered Voters: National Policy Preferences

Q154. Do you think global warming should be a low, medium, high, or very high priority for the president and Congress?

National Priority of Global Warming by Political Party



Yale / George Mason (May 2011)

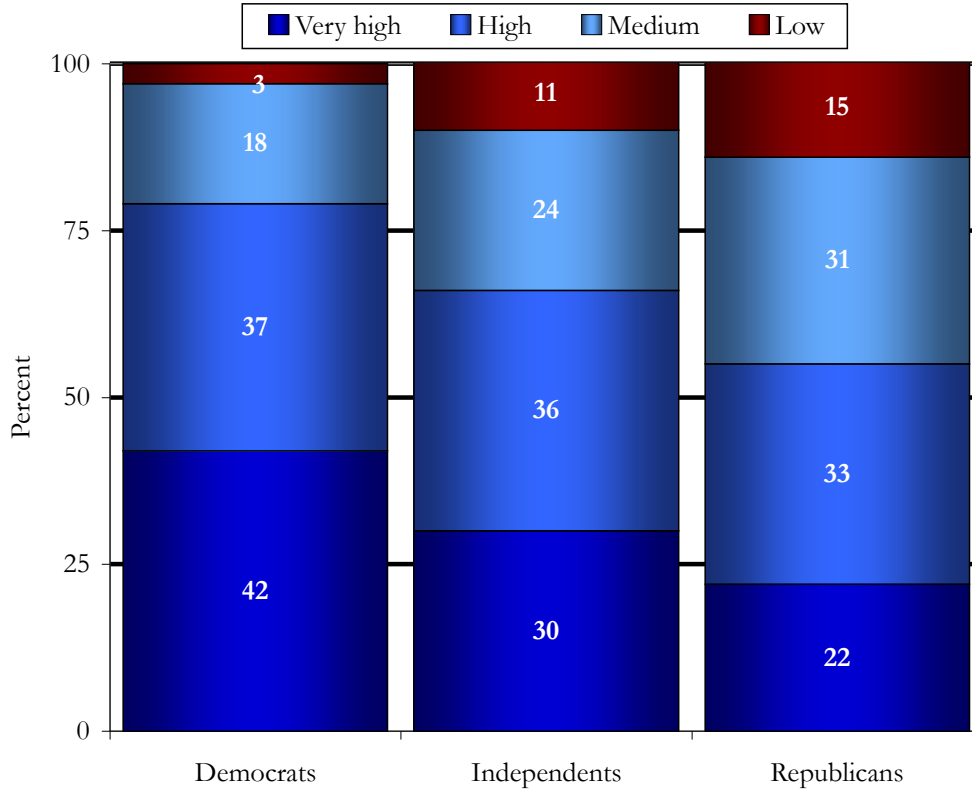
	Nat'l Avg ²	Dem	Ind	Rep	N/P ³
Very High	12	20	10	5	11
High	26	36	26	14	27
Medium	31	33	31	30	36
Low	31	12	34	50	26

² National average of registered voters.

³ No party / Not interested in politics

Q155. Do you think that developing sources of clean energy should be a low, medium, high, or very high priority for the president and Congress?

National Priority of Clean Energy by Political Party

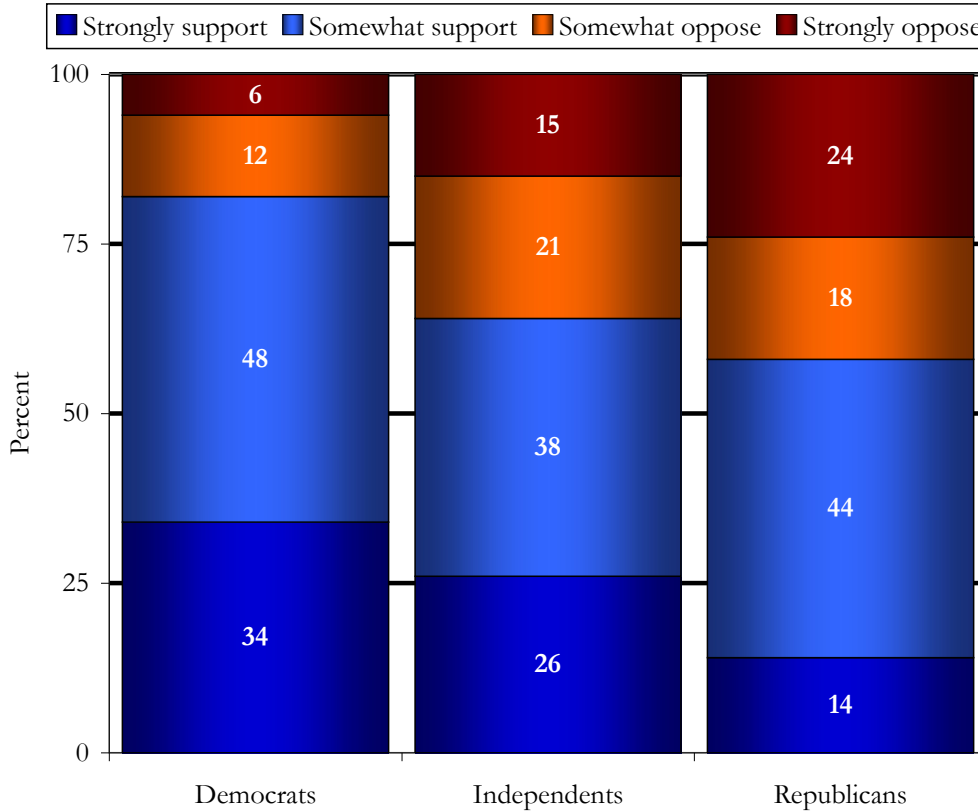


Yale / George Mason (May 2011)

	Nat'l Avg	Dem	Ind	Rep	N/P
Very High	32	42	30	22	36
High	35	37	36	33	32
Medium	24	18	24	31	30
Low	9	3	11	15	2

Q173. How much do you support or oppose requiring electric utilities to produce at least 20% of their electricity from wind, solar, or other renewable energy sources, even if it cost the average household an extra \$100 a year?

Require Utilities to Produce 20% Renewable Energy by Political Party



Yale / George Mason (May 2011)

	Nat'l Avg	Dem	Ind	Rep	N/P
Strongly support	25	34	26	14	16
Somewhat support	43	48	38	44	48
Somewhat oppose	17	12	21	18	23
Strongly oppose	16	6	15	24	13

Q174. How much do you support or oppose signing an international treaty that requires the United States to cut its emissions of carbon dioxide 90% by the year 2050?

	Nat'l Avg	Dem	Ind	Rep	N/P
Strongly support	23	35	20	11	28
Somewhat support	42	49	38	36	40
Somewhat oppose	17	12	21	18	21
Strongly oppose	19	4	21	34	11

Q177. How much do you support or oppose expanding offshore drilling for oil and natural gas off the U.S. coast?

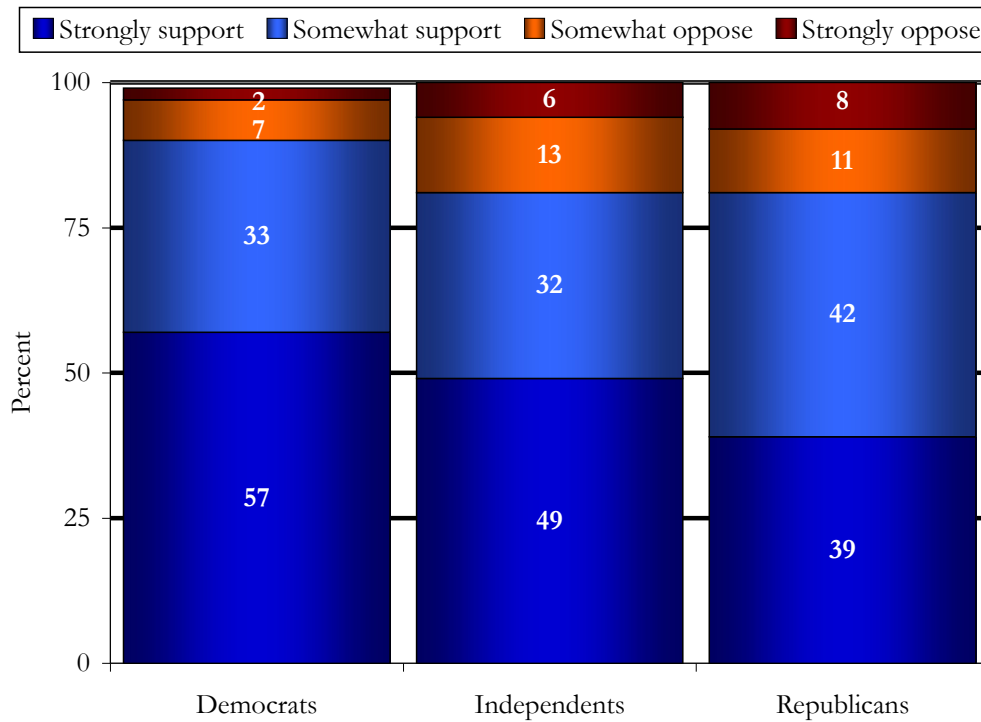
	Nat'l Avg	Dem	Ind	Rep	N/P
Strongly support	31	15	31	52	19
Somewhat support	36	40	33	30	58
Somewhat oppose	20	27	21	11	14
Strongly oppose	13	17	15	8	9

Q178. How much do you support or oppose building more nuclear power plants?

	Nat'l Avg	Dem	Ind	Rep	N/P
Strongly support	18	8	22	26	9
Somewhat support	31	27	33	36	28
Somewhat oppose	30	38	26	23	38
Strongly oppose	21	28	20	14	26

Q179. How much do you support or oppose funding more research into renewable energy sources, such as solar and wind power?

Renewable Energy Research by Political Party

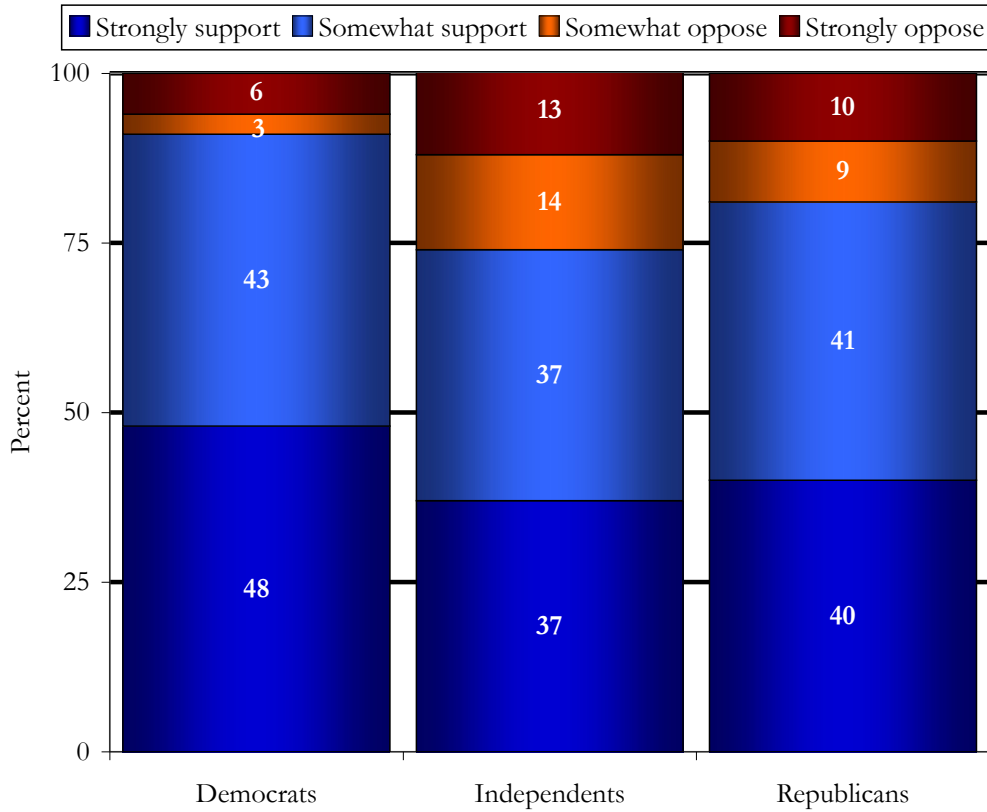


Yale / George Mason (May 2011)

	Nat'l Avg	Dem	Ind	Rep	N/P
Strongly support	49	57	49	39	57
Somewhat support	36	33	32	42	36
Somewhat oppose	10	7	13	11	5
Strongly oppose	5	2	6	8	2

Q180. How much do you support or oppose providing tax rebates for people who purchase energy-efficient vehicles or solar panels?

Tax Rebates for EE and Solar Panels by Political Party



Yale / George Mason (May 2011)

	Nat'l Avg	Dem	Ind	Rep	N/P
Strongly support	43	48	37	40	55
Somewhat support	40	43	37	41	38
Somewhat oppose	8	3	14	9	5
Strongly oppose	9	6	13	10	2

Q181. How much do you support or oppose increasing taxes on gasoline by 25 cents per gallon and returning the revenues to taxpayers by reducing the federal income tax?

	Nat'l Avg	Dem	Ind	Rep	N/P
Strongly support	9	10	8	6	12
Somewhat support	23	33	16	17	23
Somewhat oppose	27	25	30	26	32
Strongly oppose	42	32	46	51	33

Registered Voters: Local Policy Preferences

Q122. How much do you support or oppose a \$1.50 fee added to your monthly electric utility bill to fund local programs to save energy?

	Nat'l Avg	Dem	Ind	Rep	N/P
Strongly support	13	20	11	6	12
Somewhat support	36	42	34	30	42
Somewhat oppose	24	24	25	26	18
Strongly oppose	28	16	30	38	28

Q123. How much do you support or oppose paying 5% more on your monthly utility bill to get your electricity from renewable energy sources, like wind or solar?

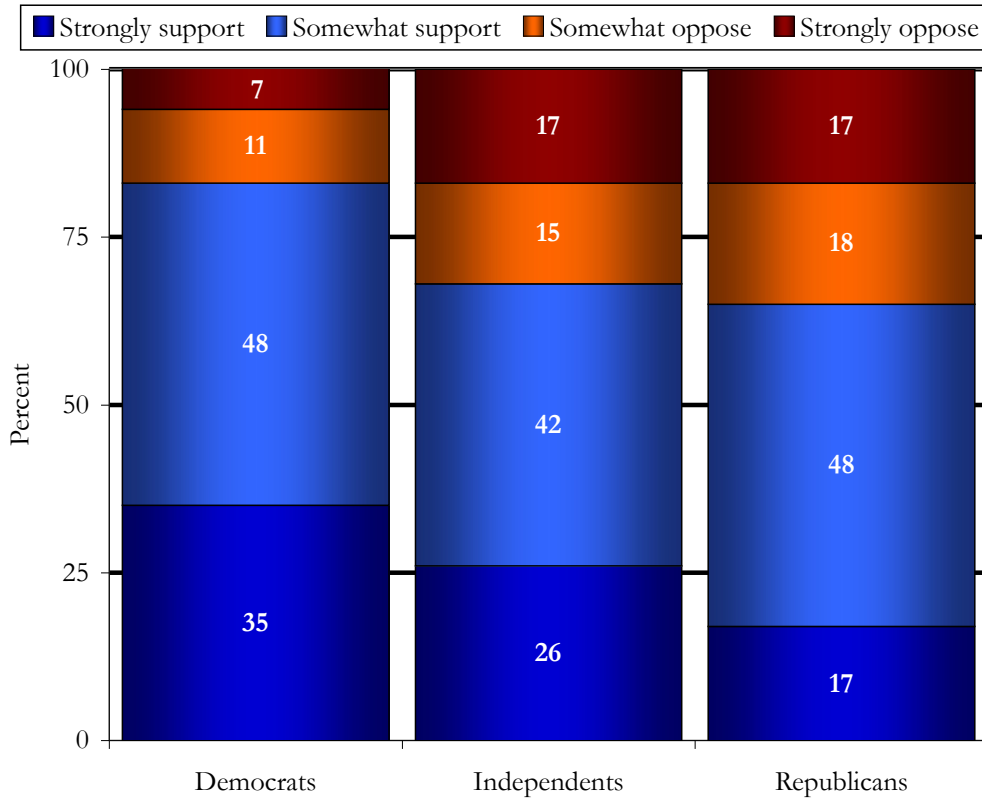
	Nat'l Avg	Dem	Ind	Rep	N/P
Strongly support	15	23	17	4	20
Somewhat support	37	41	35	34	38
Somewhat oppose	23	22	21	27	18
Strongly oppose	25	14	27	35	25

Q124. How much do you support or oppose a 10-cent fee added to each gallon of gasoline you buy, to fund local programs to improve public transportation?

	Nat'l Avg	Dem	Ind	Rep	N/P
Strongly support	8	11	10	1	12
Somewhat support	20	29	20	13	16
Somewhat oppose	25	25	24	25	32
Strongly oppose	47	35	47	61	40

Q125. How much do you support or oppose regulations requiring any new home to be more energy efficient. This would increase the initial cost by about \$7,500, but save about \$17,000 in utility bills over 30 years?

Require New Homes to be More Energy Efficient by Political Party



Yale / George Mason (May 2011)

	Nat'l Avg	Dem	Ind	Rep	N/P
Strongly support	26	35	26	17	18
Somewhat support	47	48	42	48	60
Somewhat oppose	14	11	15	18	12
Strongly oppose	13	7	17	17	11

Q126. How much do you support or oppose a \$5-a-month increase in property taxes, to provide funding to help homeowners make energy-efficiency improvements to their homes (such as replacing old, inefficient furnaces, water heaters, air conditioners, and insulation)?

	Nat'l Avg	Dem	Ind	Rep	N/P
Strongly support	14	24	9	6	9
Somewhat support	33	36	31	29	45
Somewhat oppose	24	22	21	27	23
Strongly oppose	30	18	38	38	23

Q127. How much do you support or oppose changing your county's zoning rules to promote the construction of more energy-efficient apartment buildings, instead of less efficient single-family homes?

	Nat'l Avg	Dem	Ind	Rep	N/P
Strongly support	14	19	19	5	13
Somewhat support	36	45	31	32	38
Somewhat oppose	29	27	29	34	28
Strongly oppose	20	9	22	30	21

Q128. How much do you support or oppose changing your county's zoning rules to require that neighborhoods have a mix of housing, offices, industry, schools, and stores close together, to encourage walking and decrease the need for a car?

	Nat'l Avg	Dem	Ind	Rep	N/P
Strongly support	19	26	22	7	14
Somewhat support	39	43	35	34	48
Somewhat oppose	24	21	24	29	25
Strongly oppose	18	10	19	30	13

Q129. How much do you support or oppose changing your county's zoning rules to decrease suburban sprawl and concentrate new development near the center of cities and towns, reducing commuting times?

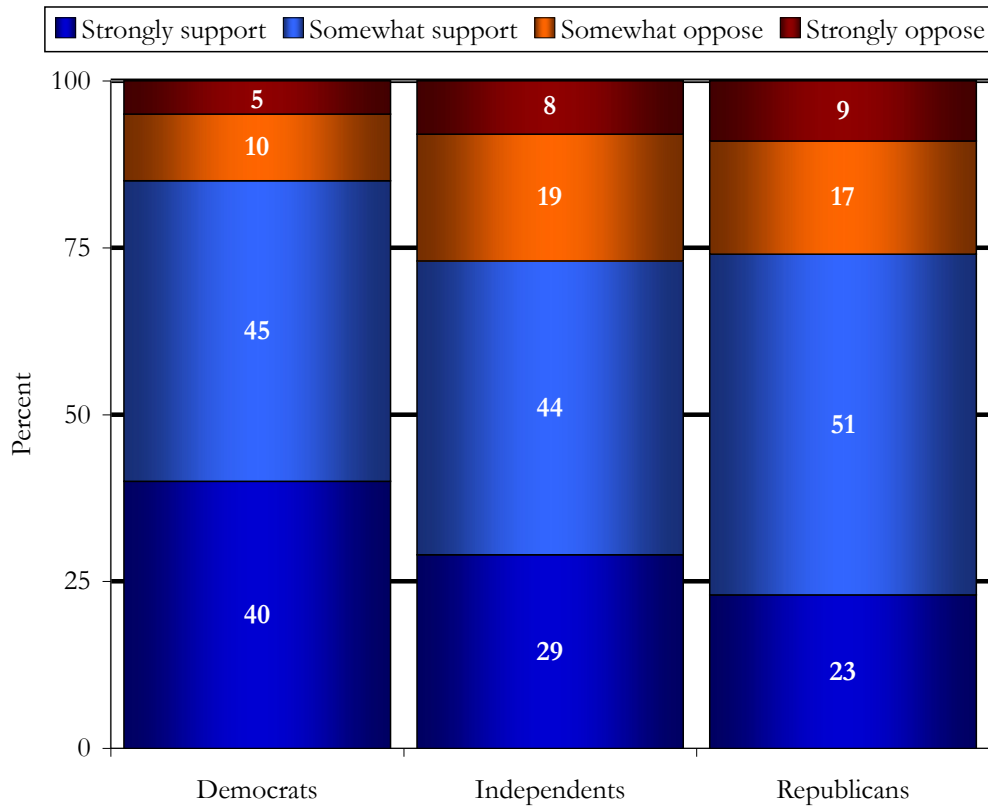
	Nat'l Avg	Dem	Ind	Rep	N/P
Strongly support	16	23	23	6	6
Somewhat support	42	46	37	42	40
Somewhat oppose	25	24	22	27	34
Strongly oppose	17	7	18	25	21

Q130. How much do you support or oppose a \$5-a-month increase in property taxes, to provide funding to homeowners that install solar panels?

	Nat'l Avg	Dem	Ind	Rep	N/P
Strongly support	13	20	12	7	13
Somewhat support	30	35	26	25	36
Somewhat oppose	26	26	24	29	25
Strongly oppose	31	19	37	40	27

Q131. How much do you support or oppose constructing bike paths and installing bike lanes on city streets?

Installing Bike Lanes by Political Party



Yale / George Mason (May 2011)

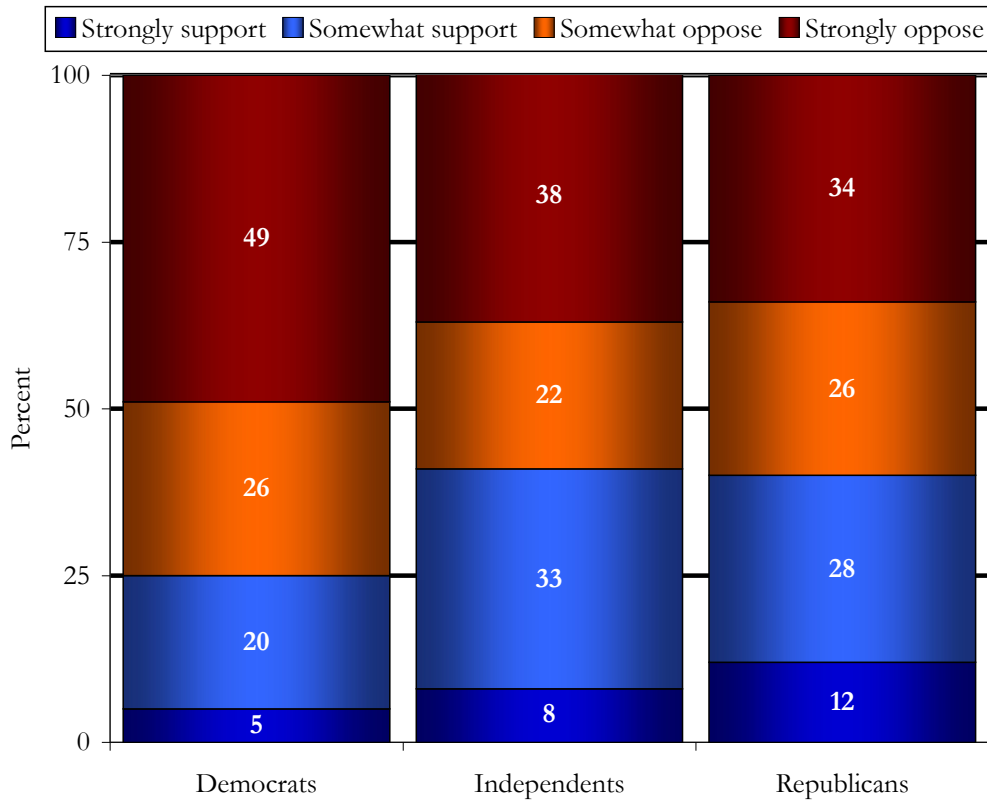
	Nat'l Avg	Dem	Ind	Rep	N/P
Strongly support	32	40	29	23	28
Somewhat support	47	45	44	51	54
Somewhat oppose	14	10	19	17	7
Strongly oppose	8	5	8	9	11

Q132. How much do you support or oppose increasing the availability of public transportation in your county?

	Nat'l Avg	Dem	Ind	Rep	N/P
Strongly support	31	39	31	21	23
Somewhat support	53	49	48	59	66
Somewhat oppose	11	7	15	13	9
Strongly oppose	6	5	6	7	2

Q133. How much do you support or oppose building a nuclear power plant in your local area?

Local Nuclear Power Plant by Political Party

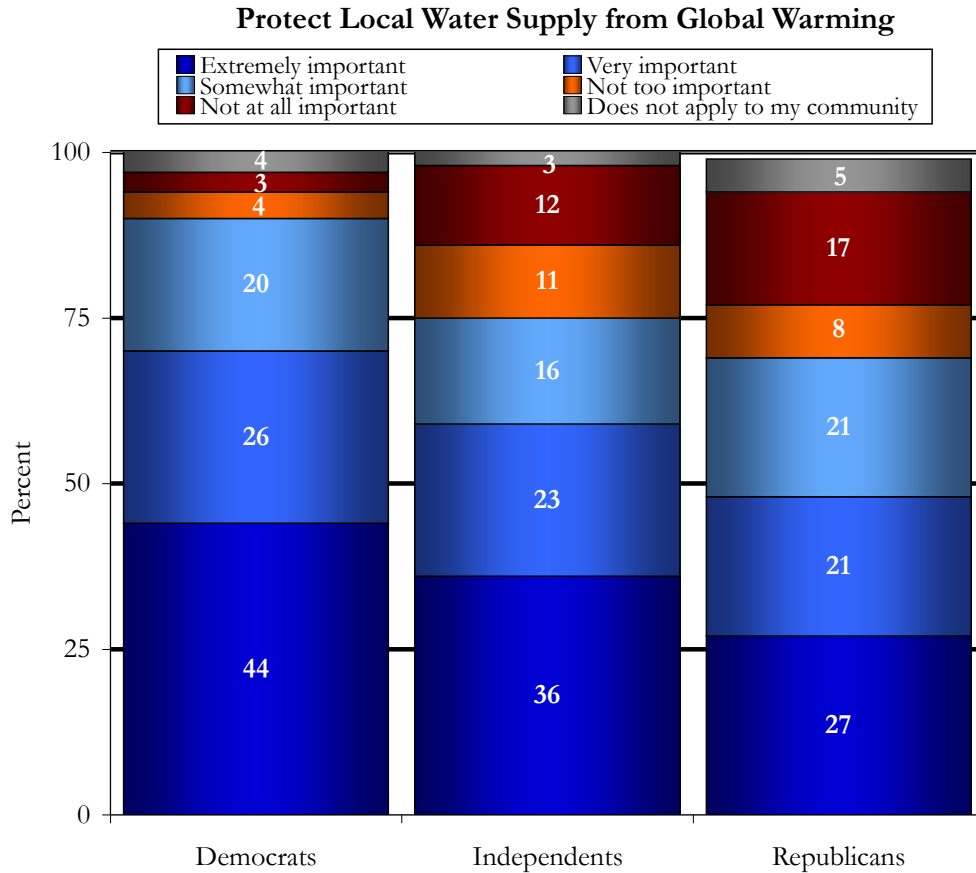


Yale / George Mason (May 2011)

	Nat'l Avg	Dem	Ind	Rep	N/P
Strongly support	9	5	8	12	5
Somewhat support	26	20	33	28	23
Somewhat oppose	24	26	22	26	21
Strongly oppose	41	49	38	34	50

Q135 - 142. How important do you think is it for your community to take steps to protect the following from global warming?

The water supply



Yale / George Mason (May 2011)

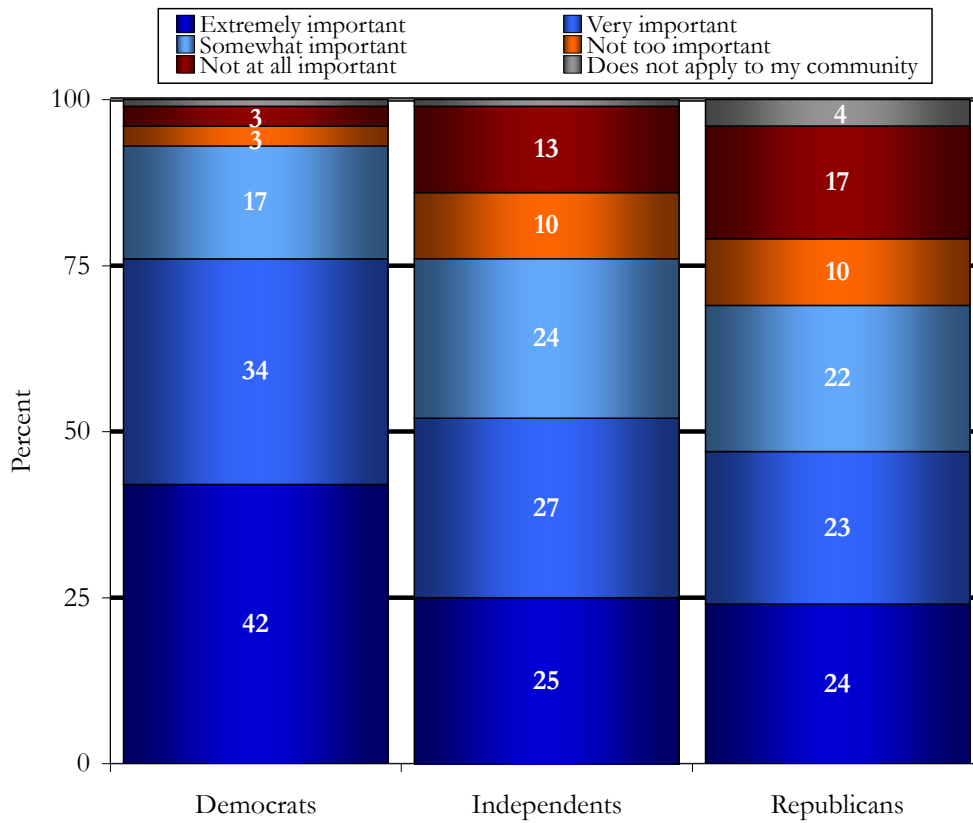
	Nat'l Avg	Dem	Ind	Rep	N/P
Extremely important	36	44	36	27	28
Very important	25	26	23	21	41
Somewhat important	19	20	16	21	24
Not too important	7	4	11	8	3
Not at all important	10	3	12	17	2
Does not apply to my community	4	4	3	5	2

The sewer system

	Nat'l Avg	Dem	Ind	Rep	N/P
Extremely important	26	35	20	21	22
Very important	26	29	25	22	33
Somewhat important	22	24	21	23	28
Not too important	9	5	13	12	10
Not at all important	10	3	14	16	2
Does not apply to my community	6	5	8	6	5

The public's health

Protect Local Public Health from Global Warming



Yale / George Mason (May 2011)

	Nat'l Avg	Dem	Ind	Rep	N/P
Extremely important	31	42	25	24	33
Very important	29	34	27	23	40
Somewhat important	20	17	24	22	21
Not too important	7	3	10	10	3
Not at all important	10	3	13	17	2
Does not apply to my community	3	1	1	4	2

Public property

	Nat'l Avg	Dem	Ind	Rep	N/P
Extremely important	19	28	16	13	17
Very important	27	33	22	22	35
Somewhat important	28	27	28	27	38
Not too important	12	7	17	18	0
Not at all important	12	3	16	18	2
Does not apply to my community	3	3	1	2	9

Agriculture

	Nat'l Avg	Dem	Ind	Rep	N/P
Extremely important	32	41	30	24	28
Very important	29	30	28	23	43
Somewhat important	18	16	19	20	22
Not too important	7	3	7	11	3
Not at all important	10	3	12	17	2
Does not apply to my community	6	7	3	6	2

Wildlife

	Nat'l Avg	Dem	Ind	Rep	N/P
Extremely important	30	42	22	22	33
Very important	27	29	26	25	31
Somewhat important	20	17	25	17	29
Not too important	9	3	14	13	2
Not at all important	10	3	12	17	2
Does not apply to my community	5	6	2	5	3

Forests

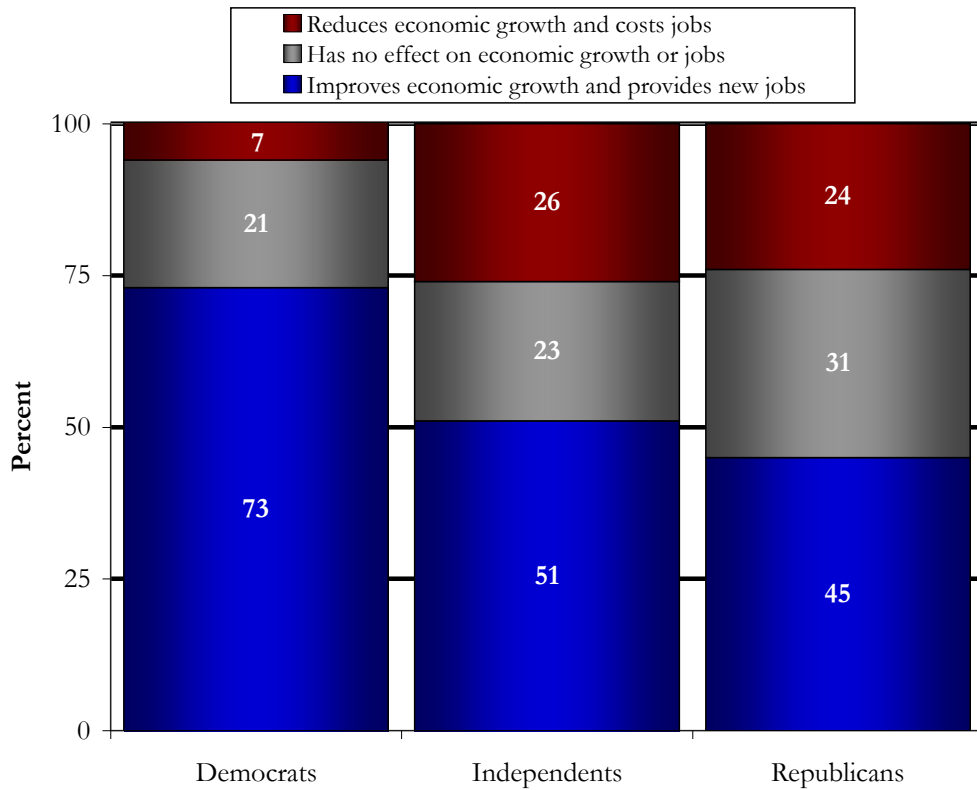
	Nat'l Avg	Dem	Ind	Rep	N/P
Extremely important	31	40	28	24	33
Very important	24	28	21	22	28
Somewhat important	20	16	24	21	26
Not too important	6	3	9	9	0
Not at all important	10	3	11	17	2
Does not apply to my community	9	10	7	7	12

Coastlines

	Nat'l Avg	Dem	Ind	Rep	N/P
Extremely important	28	36	26	20	23
Very important	22	26	20	19	28
Somewhat important	17	15	19	17	21
Not too important	6	3	10	10	0
Not at all important	10	4	13	16	4
Does not apply to my community	17	16	13	18	25

Q243. Overall, do you think that protecting the environment:

**Impact of Environmental Protection on Economic Growth
by Political Party**



Yale / George Mason (May 2011)

	Nat'l Avg	Dem	Ind	Rep	N/P
Improves economic growth and provides new jobs	56	73	51	45	43
Has no effect on economic growth or jobs	26	21	23	31	43
Reduces economic growth and costs jobs	18	7	26	24	14

Q244. When there is a conflict between environmental protection and economic growth, which do you think is more important?

	Nat'l Avg	Dem	Ind	Rep	N/P
Protecting the environment, even if it reduces economic growth	64	78	61	47	66
Economic growth, even if it leads to environmental problems	36	22	39	53	35

Registered Voters: Political Party

Q254. Generally speaking, do you think of yourself as a...

	Percent	Sample size
Democrat	36	284
Independent	24	190
Republican	29	228
Other ⁴	3	26
No party/not interested in politics ⁵	7	58
Total	100	786

Methodology

These results come from nationally representative surveys of American adults, aged 18 and older. The samples were weighted to correspond with US Census Bureau parameters for the United States. The surveys were designed by Anthony Leiserowitz of Yale University and Edward Maibach and Connie Roser-Renouf of George Mason University and conducted by Knowledge Networks, using an online research panel of American adults.

- May 2011: Fielded April 23 through May 12 with 1,010 American adults. The margin of sampling error is plus or minus 3 percent, with 95 percent confidence.
- June 2010: Fielded May 14 through June 1 with 1,024 American adults. The margin of sampling error is plus or minus 3 percent, with 95 percent confidence.
- January 2010: Fielded December 24, 2009 through January 3, 2010 with 1,001 American adults. The margin of sampling error is plus or minus 3 percent, with 95 percent confidence.
- November 2008: Fielded October 7 through November 12 with 2,164 American adults. Data was collected in two waves: wave 1 from October 7 through October 20 and wave 2 from October 24 through November 12. The margin of sampling error is plus or minus 2 percent, with 95 percent confidence.
- Question order and wording can also introduce error into the results of surveys.

⁴ “Other” responses are not reported below due to their small sample size.

⁵ Labeled “N/P” above.